

Officina — design Ronan & Erwan Bouroullec, 2015

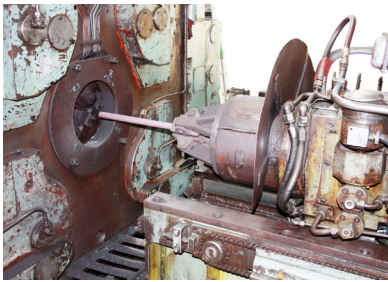


Forging, the process used to shape iron, pressing it between the hammer and anvil, has a history that stretches back over millennia. Throughout the ages, this technique has been used to create an infinite number of everyday objects and decorative artefacts. The Officina collection of tables explores the possibility of establishing a new creative language while working with an ancient fabrication process such as iron forging.

After the tables launched at the last Salone del Mobile, this year the collection expands to include a chair that echo the

forged iron structure of the tables, combined with shells in a range of different materials. Once again, absolute simplicity combines with the allure of a raw material handed down through the centuries, alive, with those slight imperfections that make each piece in this collection unique, with an unmistakably industrial feel, but combined with a profoundly refined and elegant spirit.

Ronan & Erwan Bouroullec



Production Process

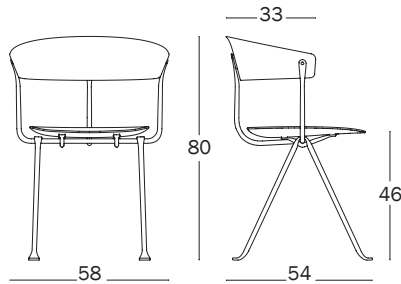


**Officina** — design Ronan & Erwan Bouroullec, 2015  
 Technical Sheet

**Chair**

Material: frame in wrought iron, galvanized or cathodically treated and painted in polyester powder. Seat and back in standard injection-moulded polypropylene with glass fibre added (suitable for outdoor use), in beech plywood, in polypropylene covered in premium-grade leather or in fabric (Kvadrat "Divina Mélange" and "Divina MD").

Magis logo is stamped on each product of our collection vouching for their originality.



Frame: Galvanized  
 Seat and Back: Dark Green  
 1555 C



Frame: Galvanized  
 Seat and Back: Metallised  
 Grey 1761 C



Frame: Galvanized  
 Seat and Back: Black 1763 C



Frame: Black  
 Seat and Back: Dark Green  
 1555 C



Frame: Black  
 Seat and Back: Metallised  
 Grey 1761 C



Frame: Black  
 Seat and Back: Black 1763 C



Frame: Galvanized  
 Seat and Back: Natural  
 Leather L-0090



Frame: Galvanized  
 Seat and Back: Black Leather  
 L-0060



Frame: Black  
 Seat and Back: Natural  
 Leather L-0090



Frame: Black  
 Seat and Back: Black Leather  
 L-0060



**Officina** — design Ronan & Erwan Bouroullec, 2015  
Technical Sheet



Frame: Galvanized  
Seat and Back: Natural Beech



Frame: Black  
Seat and Back: Black Beech



Frame: Galvanized  
Seat and Back: Black Beech



Frame: Black  
Seat and Back: Natural Beech



Frame: Galvanized  
Seat and Back: Light Grey  
Divina Mélange (120)



Frame: Black  
Seat and Back: Dark Grey  
Divina MD (193)



Frame: Galvanized  
Seat and Back: Dark Grey  
Divina MD (193)



Frame: Black  
Seat and Back: Light Grey  
Divina Mélange (120)



[magisdesign.com](http://magisdesign.com)

## Designers



**Ronan & Erwan Bouroullec**

Ronan and Erwan Bouroullec have been working together for about ten years now. Their collaboration is a permanent dialogue, nourished by their distinct personalities and a shared notion of diligence, with the intention to achieve greater balance and refinement. The Bouroullecs have been working with Magis since 2004, designing two complete furniture collections as well as other projects. These days, Ronan and Erwan Bouroullec design for numerous manufacturers and they also continue to carry out their own experimental activity which is essential to the development of their work at Galerie Kreo, Paris, where four exhibitions of their designs

were held between 2001 and 2012. They also embark on occasional architectural projects.

