

m o o o i<sup>®</sup>



## Nut Dining Chair

---

by Marcel Wanders

Sitting in the warm embrace of the Nut dining chair by will make you feel protected and as precious as the most beautiful pearl in the sea. The exquisite flavour of its design and the rich pattern of its textiles distinguish it from the mass.

---

<b>Designer</b>	Marcel Wanders
<b>Year of design</b>	2013
<b>Material</b>	Oak veneer bent plywood; solid oak legs

---

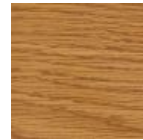
## Container Table top & Bodhi covers - Wood Stained Colours



White Wash



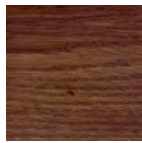
Wenge



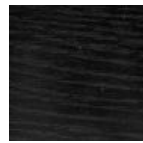
Natural Oil



Grey



Cinnamon



Black Stained

## dimensions

49cm | 19,3"

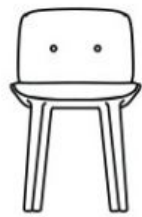


38cm | 15"

76cm | 29,9"



52cm | 20,5"



48cm | 18,9"

## Macchedil, Grezzo

# m o o o i<sup>®</sup>

## composition

47% co, 20% vi, 18% pi, 8% li, 5% pc, 2% af

## abrasion

18.000 martindale

## lightfastness 4

## firetest

EN1021 I&2



---

## Macchedil, Sottile

## composition

49% vi, 24% pl, 21% li, 6% co

## abrasion

30.000 martindale

## lightfastness 4

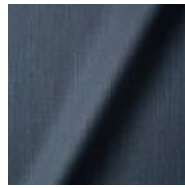
## firetest

EN1021 I&2





Macchedil Sottile  
**Cappuccino**



Macchedil Sottile  
**Deep blue**

---

## Abbracci

### composition

100% pl

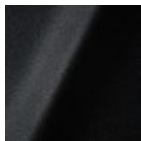
### abrasion

50.000 martindale

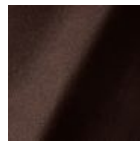
### lightfastness 4

### firetest

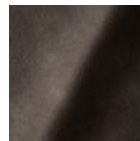
FR BS5852 0/1  
EN1021 I&2



Abbracci  
**Black**



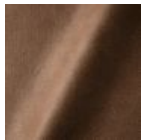
Abbracci  
**Brown**



Abbracci  
**Grey**



Abbracci  
**Oyster**



Abbracci  
**Taupe**

---

## Manga

### composition

29% pl, 71% co

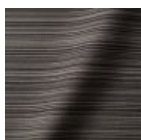
### abrasion

40.000 martindale

### lightfastness 5

### firetest

FR BS5852 0/1  
EN1021 I&2



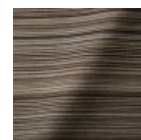
Manga  
**Grey**



Manga  
**Blue**



Manga  
**Green**



Manga  
**Brown**

## Oray

### composition

8% co, 38% vi, 15% pl, 39% li

### abrasion

30.000 martindale

### lightfastness 4

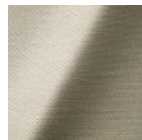
### firetest

FR BS5852 0/1

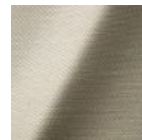
EN 1021 1&2



Oray  
**Cream**



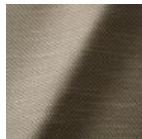
Oray  
**Sand**



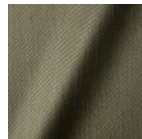
Oray  
**Rock**



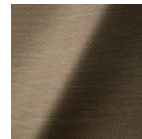
Oray  
**Mineral**



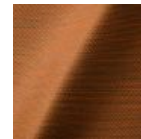
Oray  
**Gravel**



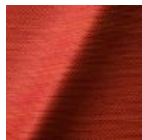
Oray  
**Dark Gull**



Oray  
**Copper**



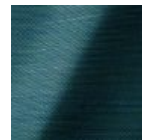
Oray  
**Rust**



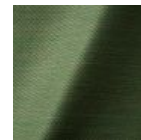
Oray  
**Flamboyant**



Oray  
**Oil**



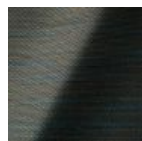
Oray  
**Aqua**



Oray  
**Peyote**



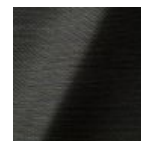
Oray  
**Ocean**



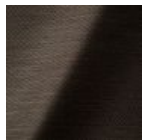
Oray  
**Metal**



Oray  
**Griffin**



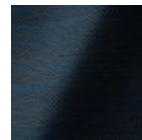
Oray  
**Dusk**



Oray  
**Chestnut**



Oray  
**Dark**



Oray  
**Indigo**



Oray  
**Ochre**

## Jacquard andaz

**composition:**

34% cotton - 30% viscose - 24% linen - 12% polyamide

**abrasion:**

25000 martindale

**lightfastness** 4-5

**firetest:**

BS EN 1021 1&2



Jacquard  
**Andaz**

---

## Jaquard Fresco

**composition**

40% vi ,36% co,14% pl, 10% li

**abrasion**

20.000> martindale

**lightfastness** 4-5

**firetest**

EN1021 1&2



Jacquard  
**Fresco**

---

## Jacquard Old Black & Blue

**composition**

52% vi, 38% co, 10% li

**abrasion**

20.000> martindale

**lightfastness** 4-5

**firetest**

EN1021 1&2



Jacquard  
**Old Blue**



Jacquard  
**Old Black**

---

## Justo

### composition

15% CO, 35% PC, 10% PL, 40% VI

### abrasion

50.000 Martindale rubs, EN ISO 12947

### lightfastness

Note 5, EN ISO 105-B02

### fire test

EN 1021-1/2

US. Cal. Bull. 117-2013

NFPA 260

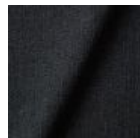
Upon request, with treatment:

BS5852 part 1

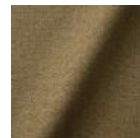
BS5852 crib 5



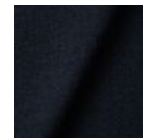
Justo  
**Alge**



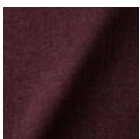
Justo  
**Bazalt**



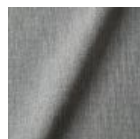
Justo  
**Bred**



Justo  
**Flod**



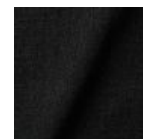
Justo  
**Hinde**



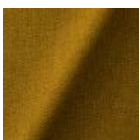
Justo  
**Lyse**



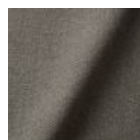
Justo  
**Muse**



Justo  
**Nat**



Justo  
**Sennep**



Justo  
**Sten**

---

## Liscio

# m o o o i<sup>®</sup>

## composition

35% WO / 35% CV / 21% CO / 9% PA

## abrasion

30.000 Martindale

## lightfastness

4-6

## firetest

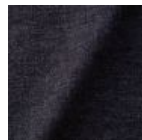
US. Cal. Bull. 117-2013

Upon request, with treatment:

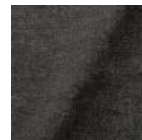
BS5852 part I



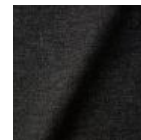
Liscio  
**Grigio Blu  
Scuro**



Liscio  
**Grigio Blu**



Liscio  
**Grigio Scuro**



Liscio  
**Muscio Scuro**



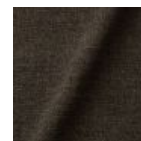
Liscio  
**Muscio**



Liscio  
**Argento**



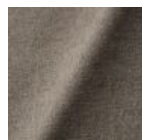
**Liscio**  
Nebbia



Liscio  
**Pietra**



Liscio  
**Perla**



Liscio  
**Latte Scuro**



Liscio  
**Latte**

---

## Trickle

## composition

60% WO / 20% PES / 20% PA

## abrasion

80.000 martindale

## lightfastness 6

## firetest

EN1021-1/2

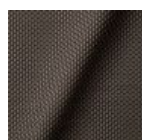
US. Cal. Bull. 117-2013

BS5852 part I

DIN 4102-B2



Trickle  
**Flour**



Trickle  
**Twig**



Trickle  
**Peat**

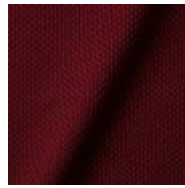


Trickle  
**Dust**





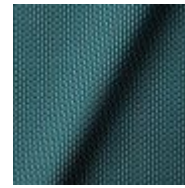
**Trickle**  
Slate



Trickle  
**Chili**



Trickle  
**Lavender**



Trickle  
**Lagoon**

## Twill

### composition

72% wo, 8% pa, 20% pl

### abrasion

75.000 martindale

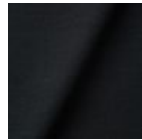
### lightfastness 5

### firetest

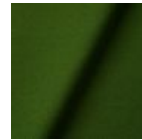
EN1021 I&2



Twill  
**Caviar**



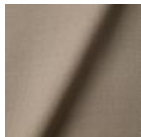
Twill  
**Graphite**



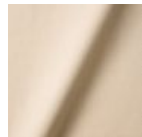
Twill  
**Grass**



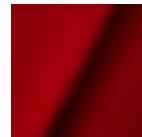
Twill  
**Grey**



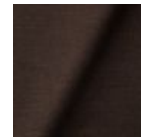
Twill  
**Linen**



Twill  
**Natural**



Twill  
**Passion**



Twill  
**Walnut**

## Twill Melange

### composition

60% WO / 20% PES / 20% PA

### abrasion

80.000 martindale

### lightfastness 6-7

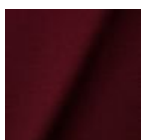
### firetest

EN1021-I/2

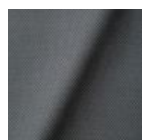
US. Cal. Bull. 117-2013

BS5852 part I

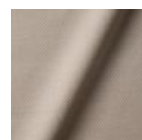
DIN 4102-B2



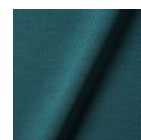
Twill Melange  
**Chili**



Twill Melange  
**Dust**



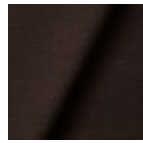
Twill Melange  
**Flour**



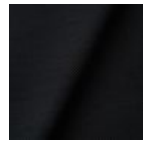
Twill Melange  
**Lagoon**



Twill Melange  
**Lavender**



Twill Melange  
**Peat**



Twill Melange  
**Slate**



Twill Melange  
**Twig**

## Velour

### composition

77% wo, 8% pa, 15% pl

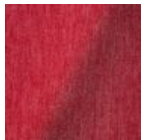
### abrasion

100.000 martindale

### lightfastness 7

### firetest

FR BS5852 0/1  
EN1021 I&2



Velour  
**Coral**



Velour  
**Stone**



Velour  
**Moss**

## Vesper

### composition

10% CO, 40% L, 10% PA, 10% PL, 30% VI

### abrasion

40.000 Martindale rubs, EN ISO 12947

### lightfastness

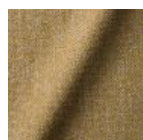
Note 5, EN ISO 105-B02

### firetest

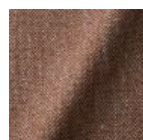
EN 1021-1/2  
US. Cal. Bull. 117-2013  
Upon request, with treatment:  
BS5852 part I  
BS5852 crib5



Vesper  
**Aluminium**



Vesper  
**Brass**



Vesper  
**Bronze**



Vesper  
**Carbon**

# m o o o i<sup>®</sup>



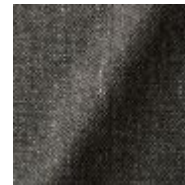
Vesper  
**Nickel**



Vesper  
**Silver**



Vesper  
**Steel**



Vesper  
**Titan**

---

## Oil

### composition:

64% VI / 27% CO / 9% PA.



---

## Extinct Animal Collection - Dodo Pavone

### composition

12% CO 88% PL

### abrasion

40.000 Martindale rubs, EN ISO 12947

### lightfastness

Note 5, EN ISO 105-B02

### firetest

US. Cal. Bull. 117-2013

Upon request, with treatment:

BS5852 part I



---

## Arredo Leather

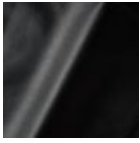
### composition

100% semi aniline leather

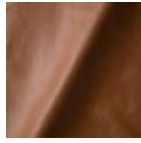
Leather is a natural product, colours may vary from hide to hide.

### firetest

EN1021 I&2



Arredo Leather  
**Black**



Arredo Leather  
**Brown**



Arredo Leather  
**White**

---

## Cervino Leather

### composition

100% aniline leather

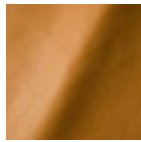
Leather is a natural product, colours may vary from hide to hide.

### firetest

EN1021 1&2



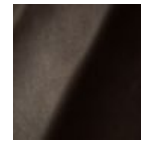
Cervino Leather  
**Anthracite**



Cervino Leather  
**Cognac**



Cervino Leather  
**Mud**



Cervino Leather  
**Pure**

---

## Kvadrat Fabrics

### Kvadrat Fabrics

Selected Moooi products can be upholstered with a collection of Kvadrat fabrics. Kvadrat designs high-quality upholstery, in an extensive range of colours and textures.

Go to our Kvadrat fabrics page for a full overview of all fabric families you can choose from.

