

# MAGIS

Raviolo by Ron Arad



# Ron Arad



## Profile:

Born in Tel Aviv in 1951, educated at the Jerusalem Academy of Art and later at the Architectural Association in London, Ron Arad co-founded the design and production studio One Off in 1981 with Caroline Thorman and later, in 1989, Ron Arad Associates architecture and design practice. In 2008 Ron Arad Architects was established alongside Ron Arad Associates. In 1994 he established the Ron Arad Studio, a design and production unit in Como, Italy, in operation until 1999. He was Professor of Product Design at the Royal College of Art in London until 2009. Ron Arad was awarded the 2011 London Design Week Medal for design excellence, and became a Royal Acade-

mician of the Royal Academy of Arts in 2013. Ron Arad's constant experimentation with the possibilities of materials such as steel, aluminium or polyamide and his radical re-conception of the form and structure of furniture has put him at the forefront of contemporary design and architecture.

Alongside his limited edition studio work, Arad designs for many leading international companies including Magis, Vitra, Moroso, Fiam, Triade, Alessi, Cappellini, Cassina, WMF and Kartell as well as many others.

Ron Arad has designed a number of Public Art pieces, most recently the Vortex in Seoul, Korea, and the Keshar Sculpture at Tel Aviv University.

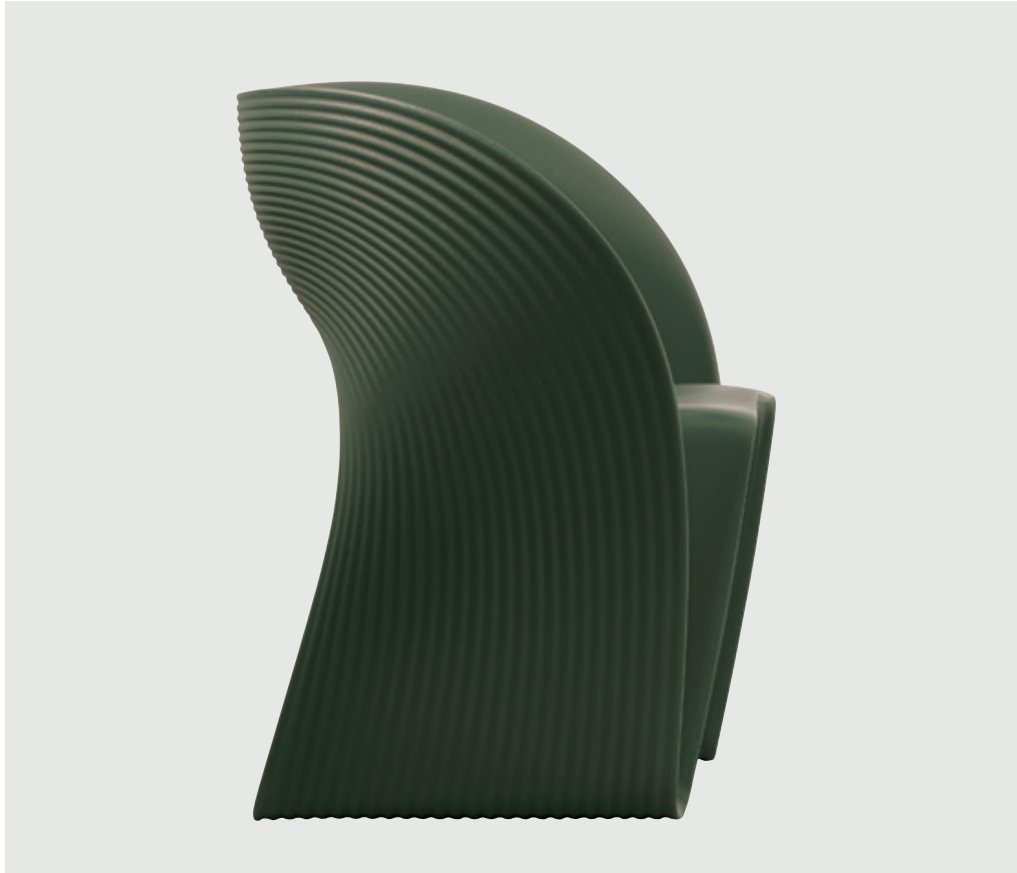


# Design and

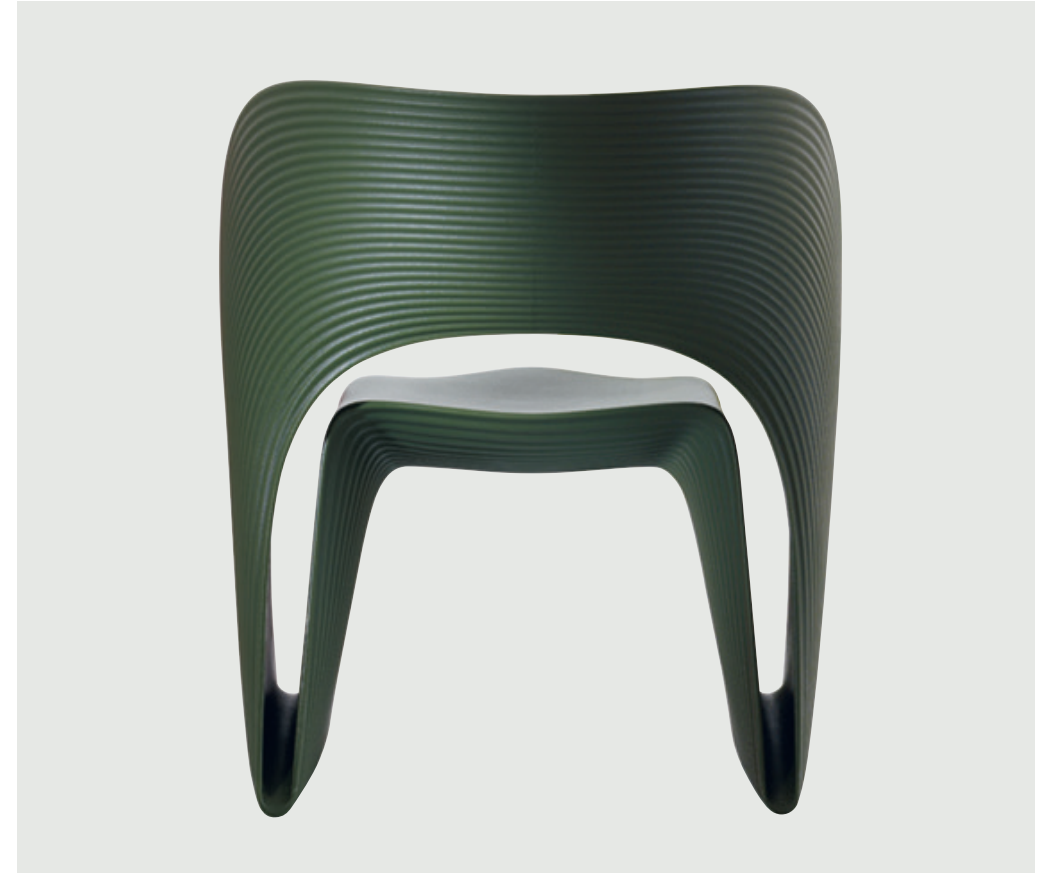
Raviolo was done by making a continuous looped ribbon with a defined inside and outside texture that serve to make the continuous band more readable, and like stuffed pasta the ribbon appears to be inflated. We did all that with a careful consideration of the easy release from the mould. We also confess that the overall final shape owes a lot to the efforts to achieve this idea using different techniques. So this time the rotational moulding was not just a cheap alternative to other moulding techniques but the one that saved an idea that looked for another technology for a long time.



# Engineering



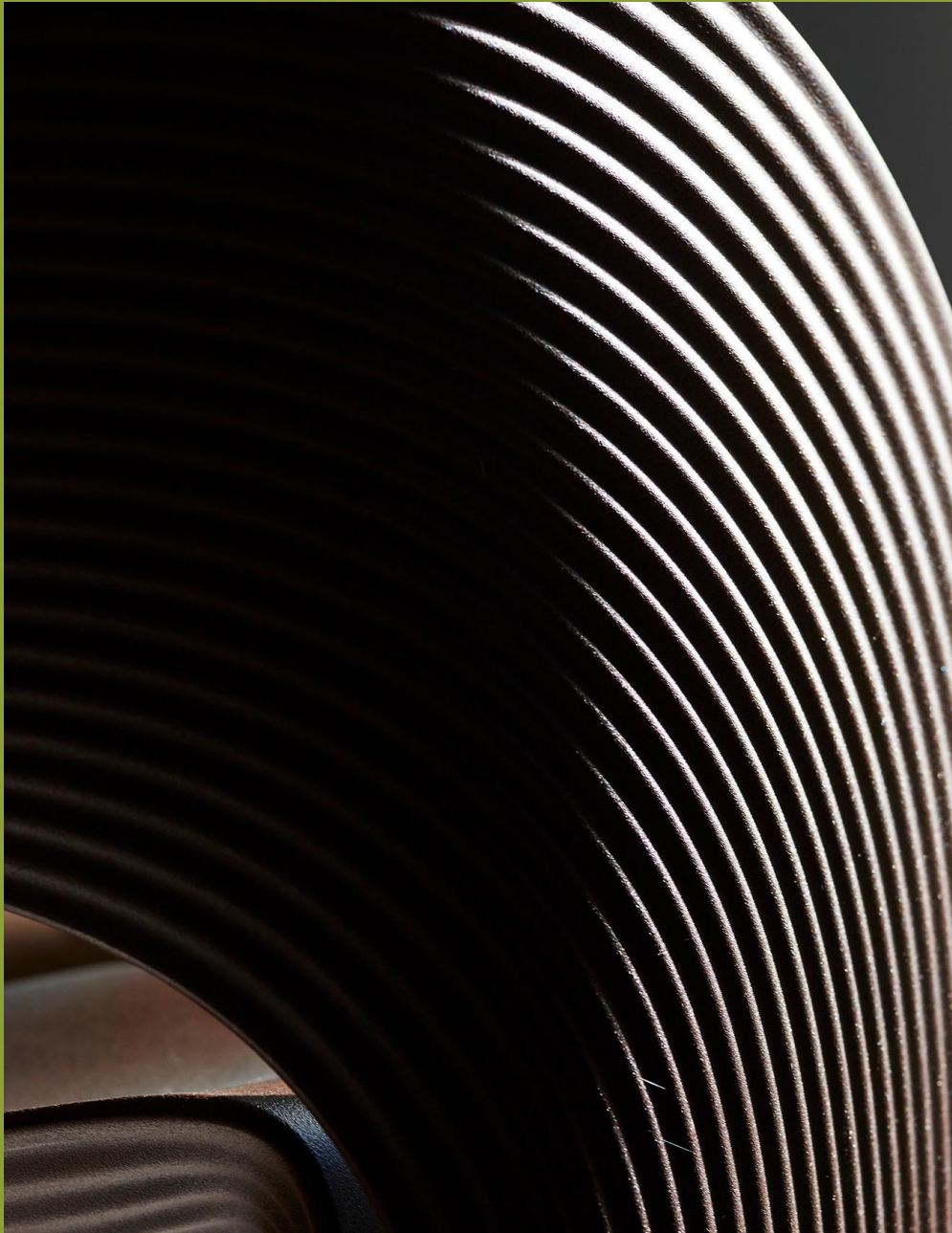
“ Raviolo was done by making a continuous looped



ribbon with a defined inside and outside texture ”



# Information



# Product

Created from a single strip of rotational-moulded polyethylene, Raviolo is available in a large range of colours and therefore it looks equally at ease in any environment, domestic and contract, indoor and outdoor.







Orange 1001 C



White 1735 C



Yellow 1665 C



Red 1004 C



Olive Green 1517 C



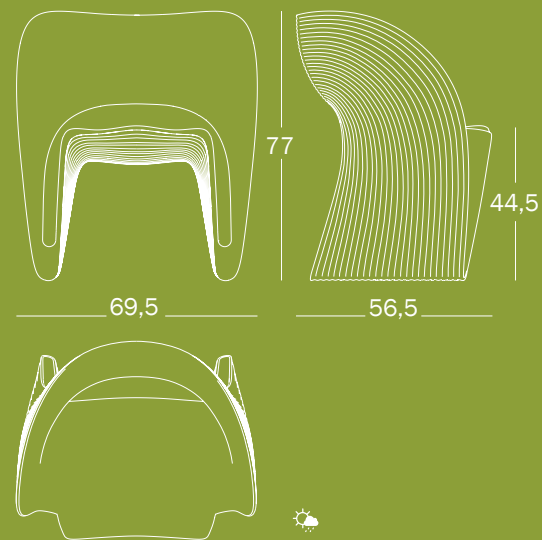
Green Pistacchio 1346 C



Purple 1156 C



Rust Brown 1071 C



#### PRODUCT CARE

We recommend using a soft rag, either dry or wet. When needed, use ph-balanced soap diluted in water. Do not use abrasive sponges as they may leave scratches. Avoid using acidic products, solvents and products containing ammonia. Periodic and correct maintenance allows the product to keep its original aspect and lengthens the duration of its performance.

#### WARNING

Do not use different cleaning products from the ones mentioned above. Do not use the product in an improper way. Do not place hot objects on it, stand on it or use the product as a ladder. Once disused, please make sure that this product is disposed in an environment-friendly way.



