

BONG lava stone finish

Catalog

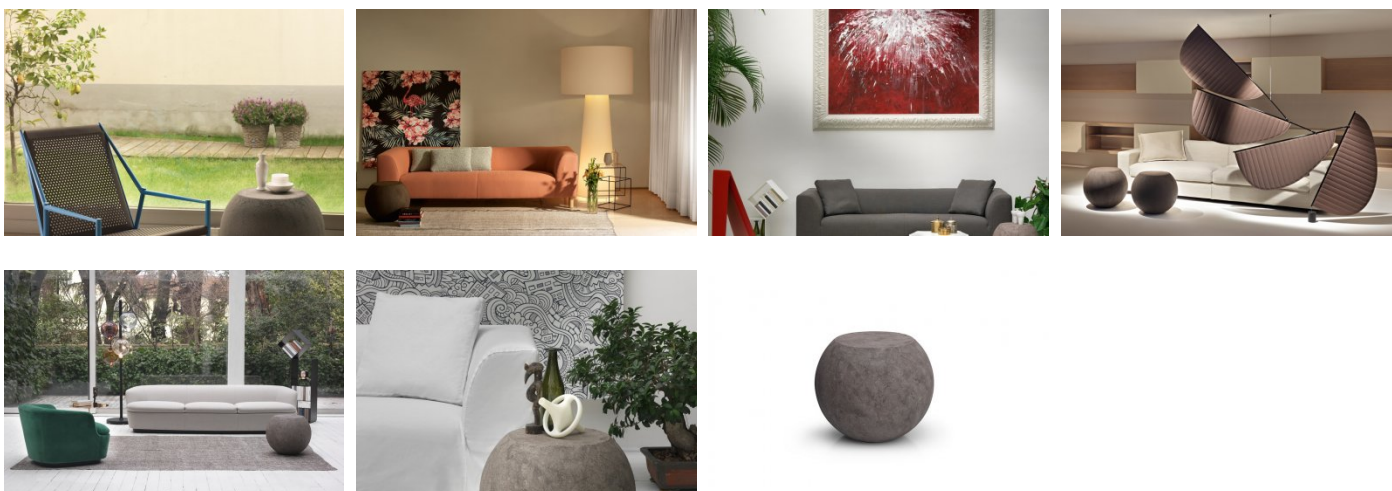
Year of design 2004

Year of production 2015

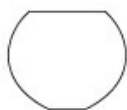
The famous and widely copied spherical table in painted fiberglass is now available in a precious lava stone finish. It is made with a manual decoration technique with three layers of Etna lava powder, which not only highlights its natural colors but also brings to the surface the stone's typical porosity.
 Dimensions: cm 48Ø x 40 H.



Gallery



Dimensions



BG/1
 cm. Ø48x40h.
 inch Ø19x15,75h.

Designer



Giulio Cappellini

Milano1954

Giulio Cappellini is a Milanese architect who has been working since 1979 with an energetic spirit and refreshing goals. Through the years his work transformed into that of a designer's, offering a personal approach to contemporary design. He has successfully established both his brand and his name and has worked as the art director for other key design brands. His most important project, the "company", transformed Cappellini into one of the biggest trend-setters worldwide. His lectures at the Milan Architecture University always generate great interest from Montreal to Valencia.

Correlati



BONG

cappellini